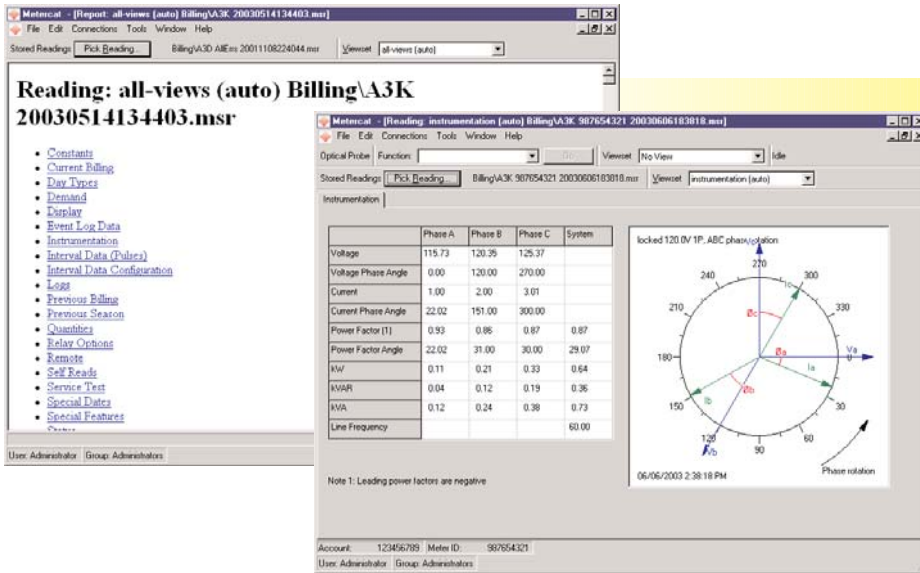


# Metercat™ Software



## Meter Configuration and Analysis Tool

Metercat is a configuration and analysis software developed to program and read Elster Electricity's A3 ALPHA® and A1800 ALPHA meters and maintain REX® meters. Designed as a flexible Windows-based application, Metercat operates under all existing 32-bit Windows platforms. In addition to its basic functionality, Metercat simplifies the management of users, user groups, and connections.

## Program Development Wizard

The Program Development Wizard guides you through the development of meter programs. Meter programs are component-based (for example, Demand, Relay Options, Logs, and Switch Times), making it possible for a component to be used by multiple programs. Metercat allows you to fully configure the A3 ALPHA or A1800 ALPHA meter including power quality monitoring and instrumentation profiling.

## Security

Metercat provides a comprehensive security system that permits administrators to easily control access to all software functions. Administrators can easily define user and group level security and customize functionality to meet the needs of a specific group, for example, meter lab personnel versus meter readers.

An additional security feature is the management of meter password sets and retention of password history.

## Communication

Metercat supports both optical and remote communication for meters equipped with internal or external modems. For meters using modem-based communication, Metercat's telephone book makes it easy to manage meter telephone numbers, including those for multiple meter installations.

## Reports

Metercat can use stored meter readings, meter programs, or individual program components to create HTML reports that can be viewed in any standard web browser.



## Profile Data Export

Metercat can export load profile and instrumentation profile data from stored meter readings to the following:

- an ASCII .TXT file that permits transfer of data to a spreadsheet or another user application
- an Itron .HHF file that permits data to be imported into MV-90

*Technology to Empower Utilities*



## Task-based Functionality

Metercat provides task-based functions for performing routine actions on A3 ALPHA, A1800 ALPHA, and REX meters. A function is defined containing one or more of the pre-defined tasks (such as a billing read or diagnostic read). The function executes on a connected meter. After the function has completed, Metercat displays a function completion report indicating the status of each task's execution. After closing the function completion report, Metercat displays a viewset detailing data retrieved from the meter. Viewsets can be customized so that only relevant information is viewed.

Metercat allows the user to assign keyboard shortcuts to execute any Metercat-defined function; Metercat can also generate a report detailing the active shortcut key assignments.

	kWh/Del	Maximum Demand	Cumulative Demand	Date/Time
Rate A	65.631975	1.620000	4.861800	05/14/2003 9:59:00 AM
Rate B	0.000000	0.000000	0.000000	
Rate C	547.571400	1.620600	11.347200	05/14/2003 4:14:00 AM
Rate D	0.000000	0.000000	0.000000	
	613.203375	1.620600	11.347200	05/14/2003 4:14:00 AM

	kVAhR (Q1+Q4)	Maximum Demand	Cumulative Demand	Date/Time
Rate A	87.502125	2.160000	6.481800	05/14/2003 9:14:00 AM
Rate B	0.000000	0.000000	0.000000	
Rate C	730.034950	2.160900	15.128700	05/14/2003 12:14:00 AM
Rate D	0.000000	0.000000	0.000000	
	817.536975	2.160900	15.128700	05/14/2003 12:14:00 AM

	kVAh/Del	Maximum Demand	Cumulative Demand	Date/Time
Rate A	109.286750	2.700000	8.102700	05/14/2003 9:14:00 AM
Rate B	0.000000	0.000000	0.000000	
Rate C	912.618900	2.701200	18.911700	05/14/2003 12:14:00 AM
Rate D	0.000000	0.000000	0.000000	
	1022.005650	2.701200	18.911700	05/14/2003 12:14:00 AM

	kWh/Sum	Maximum Demand	Cumulative Demand	Date/Time
Rate A	65.631975	1.620000	4.861800	05/14/2003 9:59:00 AM
Rate B	0.000000	0.000000	0.000000	
Rate C	547.571400	1.620600	11.347200	05/14/2003 4:14:00 AM
Rate D	0.000000	0.000000	0.000000	

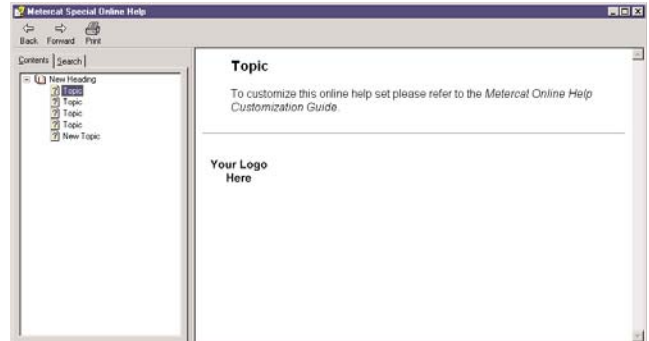
	Phase A	Phase B	Phase C	System
Voltage	115.73	120.35	125.37	
Voltage Phase Angle	0.00	120.00	270.00	
Current	1.00	2.00	3.01	
Current Phase Angle	22.02	151.00	300.00	
Power Factor (I)	0.93	0.86	0.87	0.87
Power Factor Angle	22.02	31.00	30.00	29.07
kW	0.11	0.21	0.33	0.64
kVAR	0.04	0.12	0.19	0.36
kVA	0.12	0.24	0.38	0.73
Line Frequency				60.00

Note 1: Leading power factors are negative

## Customizable Online Help

Metercat includes a special online Help file and templates that enable users to document their own procedures and processes (using Microsoft's HTML Help Workshop and an HTML editor). Once complete, this special file can be viewed through the application using the Help menu.



## System Requirements

Metercat has the following minimum system requirements:

- Intel Pentium/Celeron family, AMD K6/Athlon/Duron family, or compatible processor recommended with appropriate keyboard and pointing device
- 32 MB of RAM (64 MB recommended)
- a hard disk with 50 MB free space
- a CD ROM drive (or network access to the installation CD)
- a monitor (minimum resolution of 800 × 600 pixels, Font Size = Small Fonts)
- Microsoft Internet Explorer 4.0 or higher



### Elster Electricity, LLC

Raleigh, North Carolina, USA  
+1 800 338 5251 (US Toll Free)  
+1 905 634 4895 (Canada Main)  
support@us.elster.com  
www.elsterelectricity.com